

# VNT5200E1000

## Ventilation System

### SPECIFICATION DATA

#### VNT5200E Capacities and Performance

<b>Part Number:</b>	VNT5200E1000
<b>Product Weight:</b>	50 lbs (22.68 Kg)
<b>Input Voltage:</b>	120 VAC; 60 Hz.
<b>Input Current:</b>	1.5 A
<b>Output Power to Terminals</b>	5 VDC, 1.0 A
<b>Operating Ranges:</b>	
Temp:	34–135 °F (1.1–57.2 °C)
Humidity:	0–99% RH
<b>CFM:</b>	50–220

<b>Type of Heat Exchanger:</b>	Cross-flow (Enthalpic)
--------------------------------	------------------------

<b>Exchange Surface:</b>	127 sq. ft.
--------------------------	-------------

<b>Energy Core Dimensions:</b>	
Width:	15 in. (381 mm)
Height:	12 in. (305 mm)
Length:	12 in. (305 mm)

<b>Filter Dimensions:</b>	
Height:	12 in. (305 mm)
Width:	15 in. (381 mm)

<b>Shipping Specs:</b>	
Length:	27.5 in. (698 mm)
Height:	18.4 in. (468 mm)
Width:	25.8 in. (656 mm)
Weight:	57.5 lbs (26.08 Kg)

<b>Defrost Type:</b>	Evacuation
----------------------	------------

<b>Drain Tubing Diameter</b>	1/2 in. (12.7 mm)
------------------------------	-------------------

**Flexible Duct (2):**  
6 in. round for inlet and outlet. Flexible vinyl, compatible for connection to rigid or flexible ducting with sheet metal screws and/or tape.

**Cabinet:**  
20 gauge galvanized steel powder-coat painted.

**Certification:**  
HVI, cCSAus, CSA 22.2 N°113, ARI 1060

**Conforms to UL Std. 1812.**

**Install the unit according to National Electric Codes.**

**For more information call 1-800-468-1502 or visit our website at customer.honeywell.com.**



#### Dimensions and Clearances

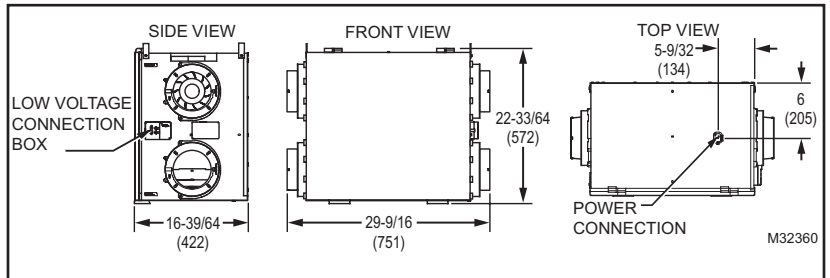


Fig. 1. Dimensions in in. (mm) and clearances.

The Honeywell Ventilation System provides improved indoor air quality through its high performance and efficiency.

#### Features

- 2 operating modes (Intermittent and Continuous Ventilation)
- Variable speed
- Compact installation
- Sloped drain pan
- Backward inclined motor blades
- Permanent lubrication of PSC motors
- Door opens downward
- No obstruction around the drain pan
- Simple electronic control
- Easy access to the control connection box
- Detachable 6 inch (dia.) collar system
- Proportional defrost
- Speed control balancing system
- Simplified mounting system
- Washable ERV core
- 10-year limited warranty on ventilation motors
- 5-year warranty



## Removable Duct Collars

Spend less time on the ladder by easily connecting the duct-work to the collars away from the unit before it's hung, and then sliding the collars back into place once ducted.

## Intuitive Balancing

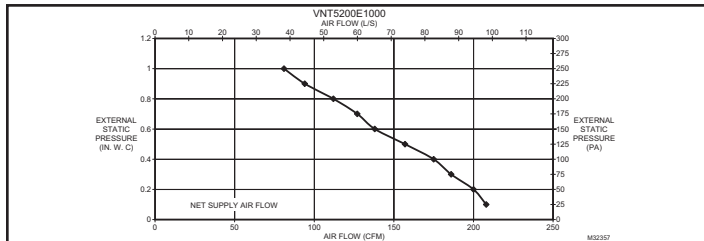
Two variable-speed motors — one for each air stream — work with the integrated speed control so installers can adjust the speed of each motor up and down to easily balance the system. This eliminates the need for adjusting dampers.

## Adjustable Hanging Straps

Just like tightening or loosening straps on a backpack, these straps make it easy to raise, lower and level the unit into place.

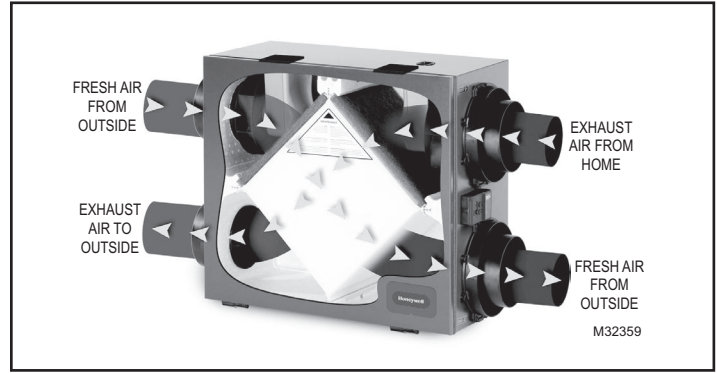
## Ventilation Performance VNT5200E

External Static Pressure		Net Supply Air Flow	
Pa	in w.c.	L/s	CFM
25	0.1	98	208
50	0.2	94	200
75	0.3	87	186
100	0.4	82	175
125	0.5	74	157
150	0.6	65	138
175	0.7	60	127
200	0.8	53	112
225	0.9	44	94
250	1.0	38	81



## Push Through—Operation System

Outside air is pushed through the heat exchanger, which acts as a noise reducer. This process is very silent and provides you with better home comfort.



## Proportional Defrost—Operation System

The defrost energy is controlled by the outdoor air temperature. The motor speed essentially increases as outdoor temperature drops to provide increased defrost capability.



**WARNING:** Installation must be performed by a qualified service technician and must comply with local codes. Remove power to the device before installing or servicing the device. Failure to connect the device according to these instructions may result in damage to the device or the controls.

## Energy Performance VNT5200E

	Supply Temperature		Net Supply Air Flow		Average Power	Sensible Recovery	Apparent Sensible
	°C	°F	L/s	CFM	Watts	Efficiency (%)	Effectiveness (%)
Heating	0	32	35	74	75	58	69
	0	32	50	106	100	51	66
	0	32	70	149	126	44	64
	-15	5	35	74	80	58	69
	35	95	35	74	75	53	

## Automation and Control Solutions

Honeywell International Inc.

1985 Douglas Drive North  
Golden Valley, MN 55422

Honeywell Limited-Honeywell Limitée  
35 Dynamic Drive

Toronto, Ontario M1V 4Z9

<http://customer.honeywell.com>

© U.S. Registered Trademark.  
© 2010 Honeywell International Inc.  
68-3077EF—01 M.S. 12-10  
Printed in U.S.A.

**Honeywell**